

RENEW & RECOVERY



Standard Renew 4' tub pictured with attached mechanical and knotty cedar cladding

Bring the Next Evolution of Healing to Your Home Wellness Space

The sense of vitality and accomplishment that washes over you after your cold dip is a beautiful thing—made even better when you can enjoy the experience on your own terms, every time. An Ice Works Bath Co tub makes the ultimate chill session a convenient habit in your everyday life. The performance and durability of our tubs will ensure your self-care soak is as safe and effective as it is revitalizing.

Each meticulously handcrafted tub is end-to-end CSA/UL approved, with recirculating filtration system, quiet yet powerful chiller, and digital thermostat control for a safe and mindful plunge experience.

Immerse yourself in Excellence

ICE WORKS BATH CO
NEWMARKET ON
CANADA

SALES@ICEWORKSBATHCO.CA



Proudly designed and manufactured in Canada. 



THE DETAILS

Standard Features (Customizations Available*)

- Premium handcrafted knotty cedar exterior (other cladding options available)
- Designed for indoor & outdoor** use
- Insulated roll up cedar cover
- Tub basin lined for comfort, safety and durability
- Automatic advanced oxidation process (AOP) filtration system: UV+Ozone
- Ambient noise when all components running: <65 decibels (quietest on the market)
- Internal all-in-one chilling system (no ice required)
- Equipped with a digital thermostat control, set as low as 2.2°C/36°F (in-use chiller upper range to 15°C/60°F)
- Removable mechanical box top and vented side panels for ventilation and easy maintenance access
- Uses standard power supply/outlet (average draw less than 1 kWh per day)
- 8 ft power cord length (ground fault protection included)
- Hose bib connection for draining
- CSA/UL Certified, end-to-end

* customization available (cladding, basin colour, detached mechanical, chiller, sanitization method and more!)

**tub to be protected from elements if used outdoors

Technical Requirements

- Must be placed on a leveled floor
 - Wood Frame Floors: recommended to add wood blocking perpendicular to floor joists in feet locations
 - Concrete Floors: no changes are required
- Consult with a structural engineer /architect as needed for weight bearing capacity of existing site conditions
- Mechanical section needs 12" clearance on back and right side and 8" clearance from front and left side
- Temperature controlled environment is required for the mechanical section. 25°C or less is highly recommended to avoid condensation
- Standard power supply (120v/15a) - outlet within 6' of centre of mechanical section

Warranty

- 3 years on the tub vessel and workmanship
- 1 year on OEM equipment, parts and labour



Dimensions

STANDARD PRODUCT	RENEW (5' TUB)		RECOVERY (4' TUB)	
	NO	YES	NO	YES
TUB INTERIOR	59" L x 24" x 23 ½"	59" L x 24" x 23 ½"	47" L x 24" x 23 ½"	47" L x 24" x 23 ½"
TUB FOOTPRINT with ATTACHED MECHANICAL	85" L x 33-1/2" W x 29-1/2" H	88" L x 36-1/2" W x 30-1/4" H	73" L x 33-1/2" W x 29-1/2" H	73" L x 33-1/2" W x 29-1/2" H
TUB FOOTPRINT with DETACHED MECHANICAL	69-1/4" L x 33-1/2" W x 29-1/2" H	72-1/4" L x 36-1/2" W x 30-1/4" H	57-1/4" L x 33-1/2" W x 29-1/2" H	60-1/4" L x 36-1/2" W x 30-1/4" H
MECHANICAL SECTION FOOTPRINT (Detached only)	21" L x 33-1/2" W x 29-1/2" H	24" L x 36-1/2" W x 30-1/4" H	21" L x 33-1/2" W x 29-1/2" H	24" L x 36-1/2" W x 30-1/4" H
Access Door Size	21-7/8" W x 26-1/8" H (Both sides of Mechanical Box)			

Weights (approximate)

STANDARD PRODUCT	RENEW (5' TUB)		RECOVERY (4' TUB)	
	ATTACHED	DETACHED	ATTACHED	DETACHED
TUB WEIGHT EMPTY	425 lbs (193 kg)	325 lbs (147 kg)	360 lbs (163 kg)	260 lbs (118 kg)
TUB WEIGHT FULL	1360 lbs (617 kg) plus weight of user	1260 lbs (572 kg) plus weight of user	945 lbs (429 kg) plus weight of user	845 lbs (383 kg) plus weight of user
WATER CAPACITY	112 gal (423 L)		70 gal (265 L)	

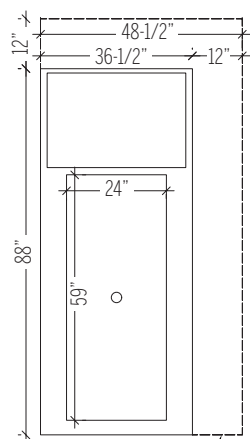
The Drawings

ATTACHED mechanical section

Min. 12" clearance for access to mechanical section and ventilation.

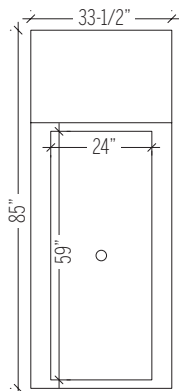
RENEW (5')

CLADDED



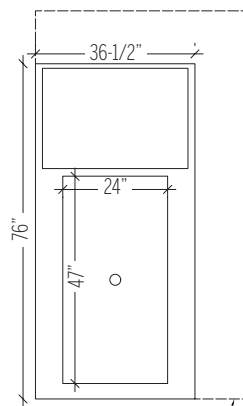
DASH DENOTES THE MIN REQUIRED CLEARANCE FOR THE MECHANICAL SECTION

NON-CLADDED



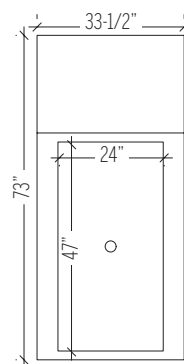
RECOVERY (4')

CLADDED



DASH DENOTES THE MIN REQUIRED CLEARANCE FOR THE MECHANICAL SECTION

NON-CLADDED



DETACHED mechanical section

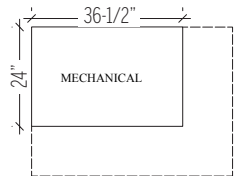
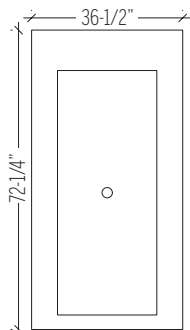
Recommend installed within 20' of tub.

MUST be on same floor/level.

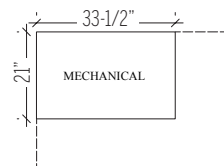
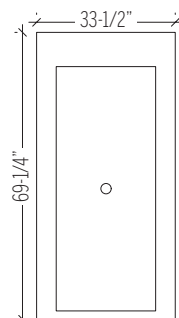
Min. 12" clearance for access to mechanical section and ventilation.

RENEW (5')

CLADDED

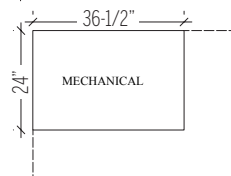
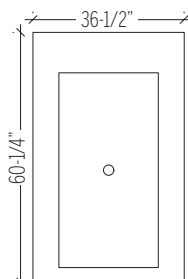


NON-CLADDED

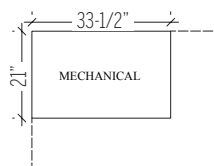
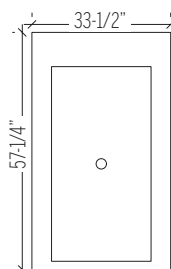


RECOVERY (4')

CLADDED



NON-CLADDED



IMMERSE YOURSELF IN EXCELLENCE

